



MINIMAL
RECOVERY.
MAXIMUM
RESULTS.




ClariVein[®] IC

Infusion Catheter

ClariVein[®] IC

Infusion Catheter

ClariVein[®] IC is an innovative device indicated for the infusion of physician specified agents in the peripheral vasculature. This unique infusion catheter has a 360-degree rotating wire tip at the distal end and does not require thermal energy or tumescence. The device is fully disposable and can be used in a physician's office. Using ClariVein IC may offer the patient the benefit of minimal pain and brief recovery time.[^]

Introduced through a microintroducer, infusion is through an opening at the distal end of the catheter and fluid is delivered by use of a rotating dispersion wire.



Motor Drive Unit

- Self-contained, low voltage power system
- Disposable (no need for capital equipment)
- Single-handed operation
- Four speed settings for wire rotation (ranging from 2,000 to 3,500 RPM)

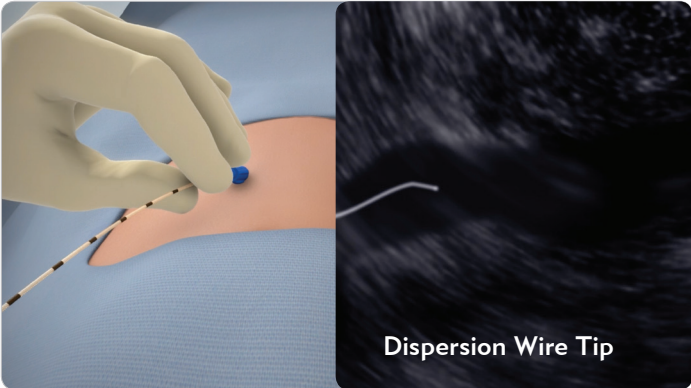


Catheter Assembly

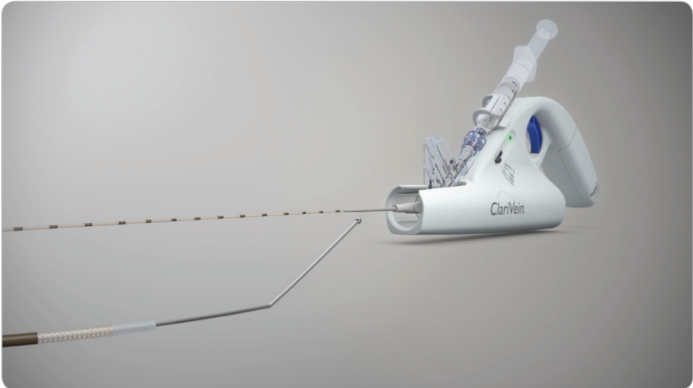
- Includes infusion catheter, rotating wire, and dispersion ball together in a cartridge for secure fastening to the Motor Drive Unit (MDU)
- Small profile, <3 French
- Flexible coaxial infusion catheter
- Easily identified under vascular imaging guidance
- Torqueability designed for vessel navigation
- Depth markers for controlled pullback
- Multiple catheter lengths available for varying patient anatomy

MINIMAL RECOVERY. MAXIMUM RESULTS.

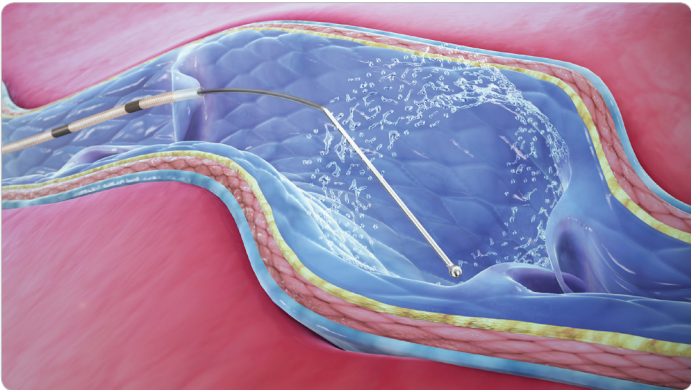
Using The ClariVein IC



1. ClariVein IC is introduced percutaneously into the peripheral vasculature under imaging guidance. The dispersion wire tip is easy to visualize for accurate placement in the peripheral vasculature.



2. The Catheter Assembly is connected to the Motor Drive Unit (MDU).



3. The MDU rotates the wire and dispersion tip allowing for targeted infusion of the physician specified agents to the peripheral vasculature.



4. Patients often return to their normal activities immediately post-operative.

The ClariVein IC Advantage

The ClariVein IC device is designed to benefit patients and physicians alike.

ADVANTAGES	PHYSICIAN	PATIENT
Minimally Invasive	✓	✓
Quick procedure time	✓	✓
Fast return to normal activities	✓	✓
May help minimize patient discomfort	✓	✓
Performed in a physician's office	✓	✓
Low profile catheter accommodates a range of vessel sizes	✓	
Reduced cost: Fully disposable device; no user serviceable parts	✓	

ClariVein.IC

Infusion Catheter



ClariVein IC Contents

- 5 mL syringe
- Check Valve
- Motor Drive Unit (MDU)
- Catheter Assembly

Ordering Information

Part Number	Catheter Length
45-018-E2S	45 cm
65-018-E4S	65 cm
85-018-E140S	85 cm

Procedure Packs and Microintroducer sets available.
Please contact your Merit Sales Representative for more information.

^ Elias, S., Lam, Y. L., & Wittens, C. H. A. (2013, March). Mechanochemical Ablation (MOCA): Status and Results [greater than two years data]. Phlebology, Vol. 28 (suppl. 1), pp. 10-14. DOI: 10.117/026835513477787

Distribuido por:



CardioParts®
Tecnología con sentido humano

ventas@cardioparts.com • www.cardioparts.com
Tels. (55) 9183-3933 (81) 8357-0779 (81) 8357-1903



Before using refer to Instructions for Use for indications, contraindications, warnings, precautions, and directions for use.



Understand. Innovate. Deliver.™

merit.com
ClariVein.com

Merit Medical Systems, Inc.
1600 West Merit Parkway
South Jordan, Utah 84095
1.801.253.1600
1.800.35.MERIT

Merit Medical Europe, Middle
East, & Africa (EMEA)
Amerikalaan 42, 6199 AE
Maastricht-Airport
The Netherlands
+31 43 358 82 22

Merit Medical Ireland Ltd.
Parkmore Business Park West
Galway, Ireland
+353 (0) 91 703 733